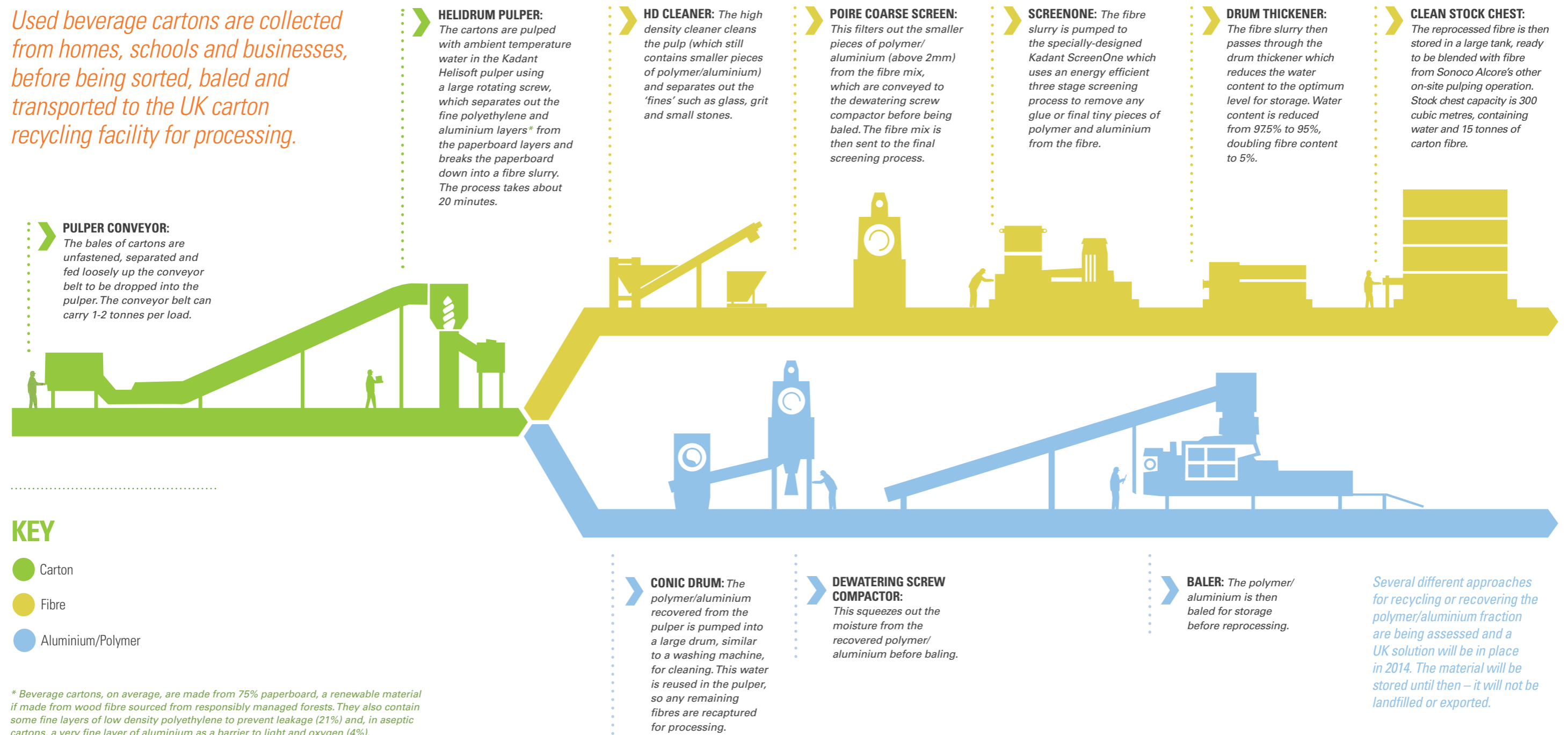


THE CARTON RECYCLING PROCESS

Used beverage cartons are collected from homes, schools and businesses, before being sorted, baled and transported to the UK carton recycling facility for processing.



Carton fibres provide an ideal raw material for the industrial-strength coreboard manufactured at the Sonoco Alcore paper mill on the same site. In fact these fibres are so strong that they can be recycled many times, making them a valuable raw material for new products and locking in the carbon for longer.

KEY

- Carton
- Fibre
- Aluminium/Polymer

* Beverage cartons, on average, are made from 75% paperboard, a renewable material if made from wood fibre sourced from responsibly managed forests. They also contain some fine layers of low density polyethylene to prevent leakage (21%) and, in aseptic cartons, a very fine layer of aluminium as a barrier to light and oxygen (4%).